



ELL101: Intro to Languages

Yule (2014) Reading Questions Ch.1 & Ch.2

Tomonori Nagano <tnagano@lagcc.cuny.edu>

Education and Language Acquisition Dept.
LaGuardia Community College

September 10, 2015

Reading Questions Ch.1 & Ch.2

- 1 Why are interjections such as *Ouch!* or *Yuck!* considered to be unlikely sources of human speech sounds?
- 2 Where is the pharynx and how did it become an important part of human sound production?
- 3 What kind of evidence is used to support the idea that language is culturally transmitted?
- 4 If Sarah could use a gray plastic shape to convey the meaning of the word "red", which property does her "language" seem to have?

Interjections as a source of language I

Question

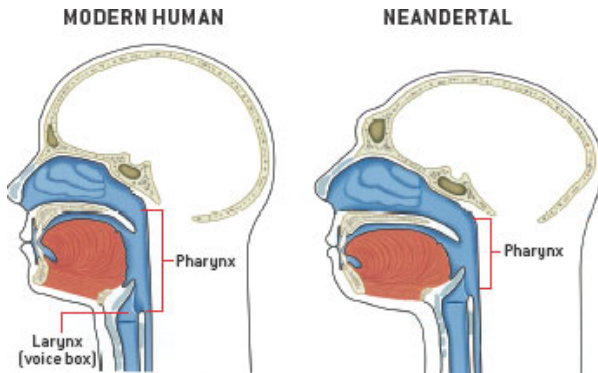
- Why are interjections such as *Ouch!* or *Yuck!* considered to be unlikely sources of human speech sounds?



Human vocal tract: pharynx I

Question

- Where is the pharynx and how did it become an important part of human sound production?



Language via culture I

Question

- What kind of evidence is used to support the idea that language is culturally transmitted?



Sarah, a speaking chimpanzee I

Question

- If Sarah could use a gray plastic shape to convey the meaning of the word "red", which property does her "language" seem to have?



Bibliography I

This presentation slide was created with \LaTeX and *beamer* \LaTeX style.